



# MONTHLY MEMBERSHIP PROGRESS REPORT

District 3 K

Results as of: 3/31/2014

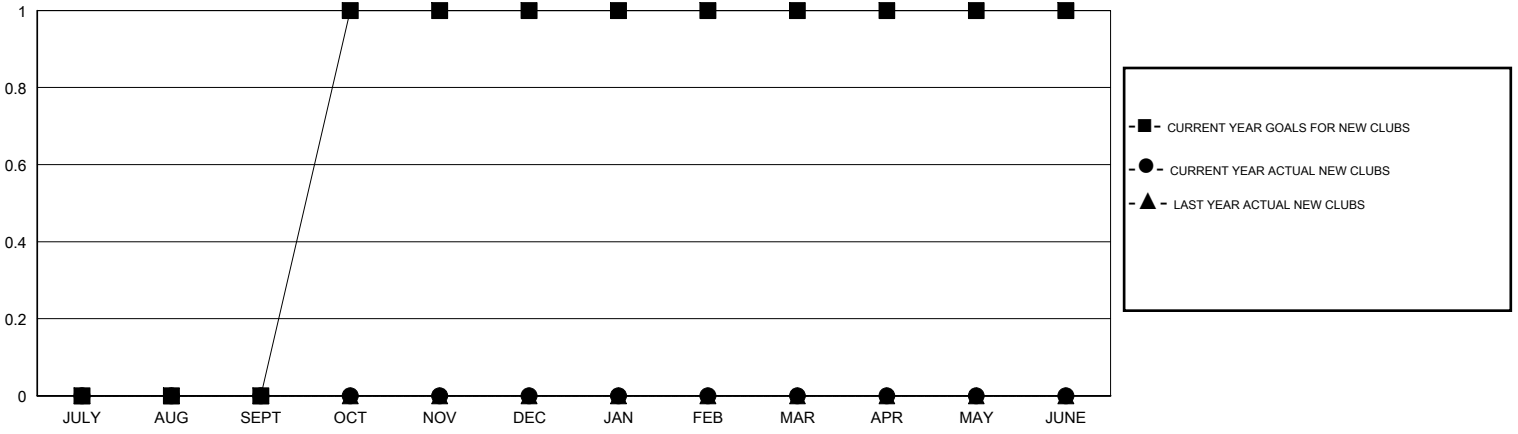
GMT: HAL GRIFFIN

LOCATION OKLAHOMA

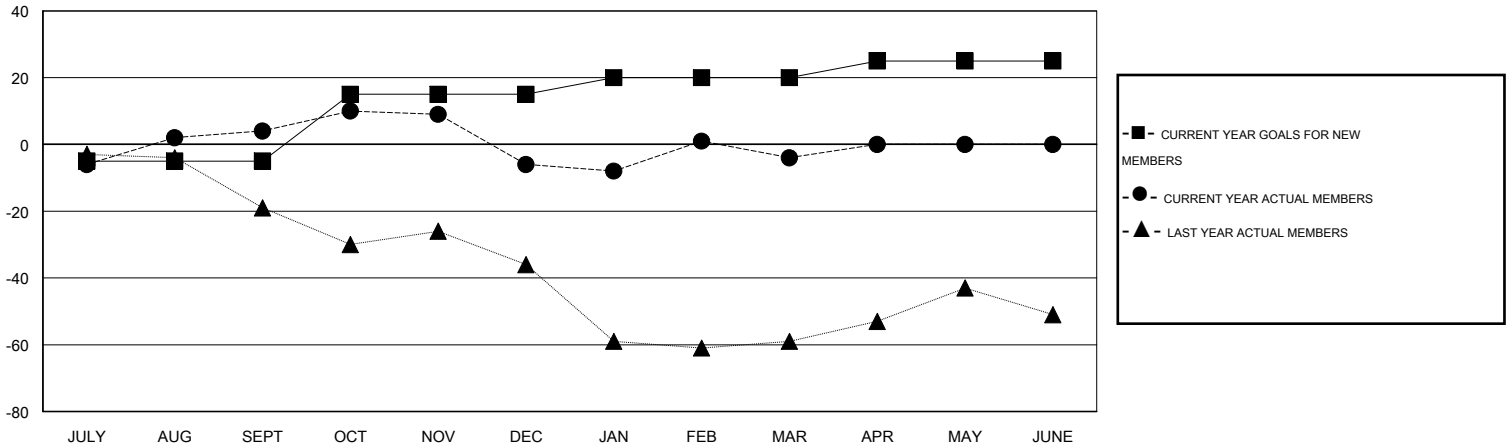
GMT CA 1

Clubs					Members				
RESULTS FOR 2013-2014					RESULTS FOR 2013-2014				
QUARTER	NEW CLUB GOAL	ACTUAL NEW CLUBS	ACTUAL DROPPED CLUBS	ACTUAL NET GAIN/LOSS	QUARTER	NEW MEMBER GOAL	ACTUAL TOTAL MEMBERS ADDED	ACTUAL DROPPED MEMBERS	ACTUAL NET GAIN/LOSS
JULY/AUG/SEPT	0	0	0	0	JULY/AUG/SEPT	-5	30	26	4
OCT/NOV/DEC	1	0	0	0	OCT/NOV/DEC	20	29	39	-10
JAN/FEB/MAR	0	0	0	0	JAN/FEB/MAR	5	32	30	2
APR/MAY/JUNE	0	0	0	0	APR/MAY/JUNE	5	0	0	0

GOALS AND ACTUAL NEW CLUBS CUMULATIVE



GOALS AND ACTUAL MEMBERS CUMULATIVE



DROPPED CLUBS: 0	27 CLUBS OF 36 ADDED 1 OR MORE NEW MEMBERS	<b>GENDER DISTRIBUTION</b>
		MALE 665 (71.20%)
		FEMALE 269 (28.80%)
<b>DROPPED MEMBERS</b>	<a href="#">CLICK HERE FOR HEALTH ASSESSMENT DATA</a>	FAMILY UNIT MEMBERS 82
DECEASED 6		HEAD OF HOUSEHOLD 41
CLUB CANCELLED 0		NON-HEAD OF HOUSEHOLD 41
OTHER 89		
<b>TOTAL 95</b>		